

Erhan 869bg Backgammon Boards - Colour Chart

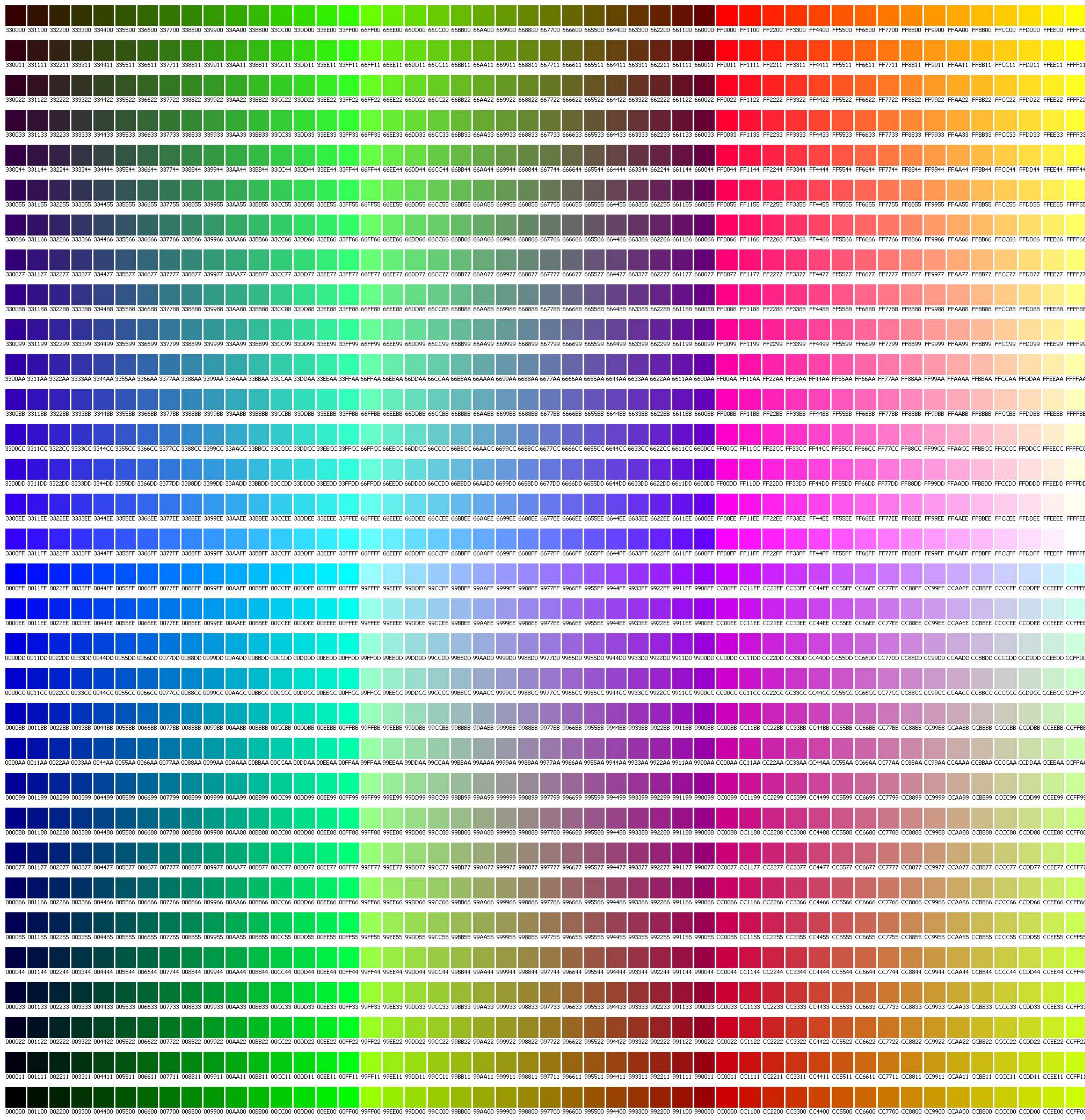
Please use the chart below to select the colours for your surface, points, checkers and leather.

(Please note that it is not possible to get leather 'exactly' the same as the colour chosen, but Erhan will get you as good a match as possible)

For custom checkers, you can select 2 colours for each set of 15 (a primary and secondary).

If you would like the colours to match a supplied logo, instead of selecting the colours from the chart you can just clearly stipulate this in your order.

Erhan 869bg Backgammon Boards - Colour Chart
Choose from the 1536 colours below and simply enter the 6 character # Code onto your order form



These are the grays:
000000 111111 222222 333333 444444 555555 666666 777777 888888 999999 AAAAAA BBBBBB CCCCCC DDDDDD EEEEEE FFFFFF